

# Cyngor Gwledig LLANELLI Rural Council

*Clerc i'r Cyngor*  
**Mark Galbraith** A.C.I.S.  
*Clerk to the Council*

Adeiladau Vauxhall, Vauxhall, Llanelli, Sir Gaerfyrddin, SA15 3BD  
Vauxhall Buildings, Vauxhall, Llanelli, Carmarthenshire SA15 3BD  
Ffon / Tel.: 01554 774103  
E.bost / E.mail: enquiries@llanelli-rural.gov.uk

*Fy nghyf:*  
*My ref:*

*Eich cyf:*  
*Your ref:*

*Gofynnwch am:*  
*Please ask for:*

3 Medi, 2025

Annwyl Gynghorydd

Gelwir amoch i gymryd rhan mewn Cyfarfod o'r **CYNGOR** a gynhelir yn Siambr y Cyngor, Adeiladau Vauxhall, Llanelli, a thrwy bresenoldeb o bell ar Ddydd Mawrth, 9 Medi, 2025, 6.00 y.h.

Yr eiddoch yn gywir

**CLERC y CYNGOR**

## AGENDA

1. Derbyn ymddiheuriadau am absenoldeb.
2. Derbyn Datganiadau o Fudd Personol gan Aelodau o ran y materion sydd i'w trafod.
3. Cyfranogiad y Cyhoedd – cyfle i aelodau'r cyhoedd ofyn cwestiynau a chyflwyno sylwadau am unrhyw eitem o fusnes sydd i'w thrafod yn ystod cyfarfod heddiw ac sy'n agored i drafodaeth gyhoeddus. Mae eitemau busnes cyfrinachol wedi'u heithrio.
4. (1) Cadarnhau ac arwyddo'r Cofnodion canlynol fel cofnod cywir o'r cyfarfod:-

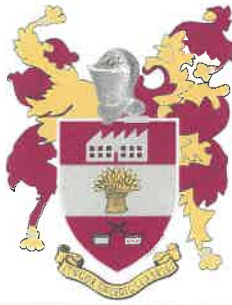
Y Cyngor	8 Gorffennaf, 2025	Tud. Rhif: 46 - 50
Y Pwyllgor Cynllunio a Chyswllt	14 Gorffennaf, 2025	Tud. Rhif: 51 - 54
Y Pwyllgor Lles a Hamdden	15 Gorffennaf, 2025	Tud. Rhif: 55 - 60
Y Pwyllgor Polisi ac Adnoddau	16 Gorffennaf, 2025	Tud. Rhif: 61 - 62
Y Pwyllgor Cyllid a Dibenion Cyffredinol	30 Gorffennaf, 2025	Tud. Rhif: 63 - 64
Y Pwyllgor Ymgynghorol Datblygiad a Dysg	31 Gorffennaf, 2025	Tud. Rhif: 65 - 67
Y Pwyllgor Cynllunio a Chyswllt	4 Awst, 2025	Tud. Rhif: 68 - 71
Y Pwyllgor Cynllunio a Chyswllt	26 Awst, 2025	Tud. Rhif: 72 - 78



Mae Cyngor Gwledig Llanelli yn croesawu gohebiaeth yn Gymraeg neu yn Saesneg  
Llanelli Rural Council welcomes correspondence in Welsh or English



- (2) Ystyried unrhyw faterion sy'n codi o'r Cofnodion er gwybodaeth yn unig.
5. Bwrdd Iechyd Prifysgol Hywel Dda - Uned Anafiadau Bach Ysbyty Tywysog Philip (MIU) - yn ymateb i Gofnod Rhif 44, i dderbyn gohebiaeth e-bost gan y Tîm Busnes y Llywodraeth, Iechyd, Gofal Cymdeithasol a Grŵp Cychwyn Cynnar ar ran yr Ysgrifennydd Cabinet dros Iechyd a Gofal Cymdeithasol ynghylch y MIU yn Ysbyty Tywysog Philip ac i gytuno ar ymateb y cyngor.
  6. Canolfan Llwynhendy - Parc Y Gwili – Ymddygiad Hynod Ddefnyddiol - ymhellach i Gofnod Rhif 95 (2) – derbyn adroddiad diweddar llafar gan y Swyddog Datblygu Cymunedol ac i gytuno ar ymateb y cyngor.
  7. Cymdeithas Rygbi Cymru ymgynghoriad - ymgynghoriad ffurfiol a chysylltiad cyhoeddus ar strwythur a chyllid elitaidd rygbi yn Cymru. I ystyried ac i drafod yr effeithiau posib ar ffransia rhagbi rhanbarthol y Scarlets.  
  
(1) Scarlets – mater a ofynnwyd am ei chynnwys ar yr agenda gan Cllr. J. Lovell i dderbyn a ystyried cymorth i'r Scarlets i barhau i fod yn dim rygbi pro wedi ei ariannu gan y WRU sy'n seiliedig yn Llanelli a chytuno ar ymateb y cyngor.  
  
(2) I dderbyn a ystyried gohebiaeth trwy e-bost gan y Prif Swyddog, Cyngor Tref Llanelli, yn ymwneud â dangosfa ymgyrch yn ogystal â chefnogaeth i'r Scarlets a gynhelir yn Parc Y Scarlets ar Dydd Sadwrn, 27 Medi 2025
  8. Ymlaen Llanelli – Cyfarfod Cyffredinol Blynnyddol – i derbyn a gwahoddiad i fynychu'r Cyfarfod Cyffredinol Blynnyddol Ymlaen Llanelli i'w gynnal ddydd Mawrth, 16 Medi 2025.
  9. Nodi er gwybodaeth amserlen o'r materion a nodwyd.
  10. Nodi, er gwybodaeth, llythyron o ddiolch a dderbyniwyd gan y canlynol:-
    - (1) Friends of Dafen PTA;
    - (2) Phoenix Theatre Group;
    - (3) Royal British Legion – Llanelli Branch.



# Cyngor Gwledig LLANELLI Rural Council

*Clerc i'r Cyngor*  
**Mark Galbraith** A.C.I.S.  
*Clerk to the Council*

Adeiladau Vauxhall, Vauxhall, Llanelli, Sir Gaerfyrddin, SA15 3BD  
Vauxhall Buildings, Vauxhall, Llanelli, Carmarthenshire SA15 3BD  
Ffon / Tel.: 01554 774103  
E.bost / E.mail: enquiries@llanelli-rural.gov.uk

*Fy nghyf:*  
*My ref:*

*Eich cyf:*  
*Your ref:*

*Gofynnwch am:*  
*Please ask for:*

3 September, 2025

Dear Councillor

You are summoned to participate in a **COUNCIL** Meeting to be hosted at the Council Chamber, Vauxhall Buildings, Vauxhall, Llanelli, and via remote attendance on Tuesday, 9 September, 2025 at 6.00 p.m.

Yours sincerely

**CLERK to the COUNCIL**

## AGENDA

1. To receive apologies for absence.
2. To receive Members' Declarations of Interest in respect of the business to be transacted.
3. Public Participation – an opportunity for members of the public to ask questions and make representations about any item of business to be transacted during today's meeting and which is open for public discussion. Confidential items of business are excluded.
4. (1) To confirm and sign the following Minutes as a true record of proceedings:-

Council	8 July, 2025	Page Nos: 46 - 50
Planning and Liaison Committee	14 July, 2025	Page Nos: 51 - 54
Recreation and Welfare Committee	15 July, 2025	Page Nos: 55 - 60
Policy and Resources Committee	16 July, 2025	Page Nos: 61 - 62
Finance and General Purposes Committee	30 July, 2025	Page Nos: 63 - 64
Learning and Development Consultative Committee	31 July, 2025	Page Nos: 65 - 67
Planning and Liaison Committee	4 August, 2025	Page Nos: 68 - 71
Planning and Liaison Committee	26 August, 2025	Page Nos: 72 - 78



Mae Cyngor Gwledig Llanelli yn croesawu gohebiaeth yn Gymraeg neu yn Saesneg  
Llanelli Rural Council welcomes correspondence in Welsh or English



- (2) To consider any matters arising from the Minutes for information purposes only.
5. Hywel Dda University Health Board – Prince Philip Hospital Minor Injury Unit (MIU) – further to Minute No. 44, to receive email correspondence from the Government Business Team, Health, Social Care and Early Years Group on behalf of the Cabinet Secretary for Health and Social Care regarding the MIU at Prince Philip Hospital and to agree the council's response.
6. Canolfan Llwynhendy - Parc Y Gwili – Anti Social Behaviour – further to Minute No. 95 (2) – to receive a verbal update report from the Community Development Officer and to agree the council's response.
7. Welsh Rugby Union Consultation – a formal consultation and public engagement on the future structure and funding of elite rugby in Wales. To consider and discuss the potential ramifications for the Scarlets Regional Rugby franchise.
- (1) Scarlets – matter requested for inclusion on the agenda by Cllr. J. Lovell to receive and consider support to the Scarlets to remain being a WRU funded pro rugby team based in Llanelli and to agree the council's response.
- (2) To receive and consider email correspondence from the Principal Officer, Llanelli Town Council, regarding a campaign demonstration in support of the Scarlets to be held at Parc Y Scarlets on Saturday, 27 September 2025.
8. Ymlaen Llanelli – Annual General Meeting – to receive an invitation to attend Ymlaen Llanelli's Annual General Meeting to be held on Tuesday, 16 September, 2025.
9. To note for information the schedule of matters reported.
10. To note for information, letters of appreciation received from the following:-
- (1) Friends of Dafen PTA;
  - (2) Phoenix Theatre Group;
  - (3) Royal British Legion – Llanelli Branch.

# ITEM 5

LLANELLI RURAL COMMUNITY COUNCIL	
DATE	31 JUL 2025
FILE REF.	
PASSED TO	CL

**From:** HSCEY.GovernmentBusinessTeam@gov.wales <HSCEY.GovernmentBusinessTeam@gov.wales>

**Sent:** 30 July 2025 09:50

**To:** Mark Galbraith <Mark.Galbraith@Llanelli-Rural.gov.uk>

**Subject:** RE: Minor injury Unit - Prince Philip Hospital

20250722 - TO/JMHSC/01757/25 –  
Mark Galbraith (Llanelli Rural Council)

Dear Mark Galbraith,

Thank you for your email below. I have been asked to reply on this occasion and apologise for the delay in doing so.

The Cabinet Secretary has noted your concerns and recognises the strength of feeling local residents and Councillors have about the provision of NHS services in West Wales.

I hope you will understand that neither the Cabinet Secretary for Health and Social Care, nor his officials, are able to comment on the proposals for the temporary MIU service change at this stage. This is not because he wishes to be unhelpful, but because his role is to set the policy and strategic direction of the NHS in Wales. The Cabinet Secretary is clear that he expects health boards to provide safe and sustainable services for its population. Responsibility for planning and delivering local healthcare services, including recruitment and workforce planning, rests with individual health boards. They are best placed to assess and respond to the specific needs of their communities.

We hope you took the opportunity to feed any concerns the Council has into the consultation exercise carried out by Hywel Dda University Health Board.

In relation to your points on workforce issues, these are not unique to Llanelli or Hywel Dda University Health Board. Since 2017, the Welsh Government has provided targeted financial

incentives to attract GP trainees to specialist training schemes in north, mid and west Wales - areas that have historically faced recruitment challenges. Under this scheme, GP trainees who take up posts in these regions and complete one year of practice following their training receive an incentive payment.

The Welsh Government, working with NHS Wales Shared Services Partnership and health boards, has supported the all-Wales international recruitment programme, successfully recruiting more than 1,000 internationally educated healthcare professionals, including doctors and nurses, many of whom are now working in west Wales.

While international medical graduates are recruited into GP specialty training programmes, the direct recruitment of qualified GPs from overseas remains highly constrained. This is primarily due to the requirements of the General Medical Council.

Officials continue to work closely with the health board and monitor the situation around the MIU.

Yours sincerely,

Tîm Busnes y Llywodraeth/Government Business Team  
Grŵp Iechyd, Gofal Cymdeithasol a'r Blynyddoedd/Health, Social Care and Early Years Group

---

**From:** Mark Galbraith <[Mark.Galbraith@Llanelli-Rural.gov.uk](mailto:Mark.Galbraith@Llanelli-Rural.gov.uk)>  
**Sent:** 01 July 2025 14:10  
**To:** Correspondence Mail - JM <[Correspondence.Jeremy.Miles@gov.wales](mailto:Correspondence.Jeremy.Miles@gov.wales)>  
**Subject:** Minor injury Unit - Prince Philip Hospital

Dear Minister, please find attached a letter I've been instructed to send to you on behalf of the council.

The council looks forward to receiving your considered reply in due course.

Many thanks

Mark

Mark Galbraith  
Clerc y Cyngor | Clerk to the Council  
Cyngor Gweldig Llanelli | Llanelli Rural Council  
Vauxhall Buildings, Vauxhall, Llanelli, SA15 3BD  
01554 774103  
[mark.galbraith@llanelli-rural.gov.uk](mailto:mark.galbraith@llanelli-rural.gov.uk)  
<http://www.llanelli-rural.gov.uk/>



Sganiwyd y neges hon am bob feirws hysbys wrth iddi adael Llywodraeth Cymru. Mae Llywodraeth Cymru yn cymryd o ddifrif yr angen i ddiogelu eich data. Os cysylltwch â Llywodraeth Cymru, mae ein [hysbysiad preifatrwydd](#) yn esbonio sut rydym yn defnyddio eich gwybodaeth a sut rydym yn diogelu eich preifatrwydd. Rydym yn croesawu gohebiaeth yn Gymraeg. Byddwn yn anfon ateb yn Gymraeg i ohebiaeth a dderbynnir yn Gymraeg ac ni fydd gohebu yn Gymraeg yn arwain at oedi. ----- On leaving the Welsh Government this email was scanned for all known viruses. The Welsh Government takes the

protection of your data seriously. If you contact the Welsh Government then our [Privacy Notice](#) explains how we use your information and the ways in which we protect your privacy. We welcome receiving correspondence in Welsh. Any correspondence received in Welsh will be answered in Welsh and corresponding in Welsh will not lead to a delay in responding.





# Cyngor Gwledig LLANELLI Rural Council

*Clerc i'r Cyngor*  
**Mark Galbraith** A.C.I.S.  
*Clerk to the Council*

Adeiladau Vauxhall, Vauxhall, Llanelli, Sir Gaerfyrddin, SA15 3BD  
Vauxhall Buildings, Vauxhall, Llanelli, Carmarthenshire SA15 3BD  
Ffon / Tel.: 01554 774103  
E.bost / E.mail: enquiries@llanelli-rural.gov.uk

*Fy nghyf:*  
*My ref:*

C/KPH

*Eich cyf:*  
*Your ref:*

*Gofynnwch am:*  
*Please ask for:*

1 July 2025

Jeremy Miles M.S.  
Cabinet Secretary for Health and Social Care  
Welsh Government  
5<sup>th</sup> Floor  
Ty Hywel  
Cardiff bay  
CF99 1SN

Dear Minister,

## **HYWEL DDA UNIVERSITY HEALTH BOARD – CONSULTATION ENGAGEMENT PRINCE PHILIP HOSPITAL – MINOR INJURY UNIT – TEMPORARY REDUCTION IN OPERATING HOURS**

The council has instructed me to write to you regarding the above matter. This follows the council receiving a recent online presentation from senior Health Board officials at a council meeting held on 11 June 2025, outlining four options for the future operation of the Minor Injury Unit (MIU).

The purpose in writing to you is to highlight the Health Board's recruitment drive and attempts to employ additional doctors and GPs to support the ongoing operation of the MIU service model and what more could be done. Moreover, to ascertain whether Welsh Government, through the range of its extensive powers, can act or is able to offer further assistance and support to the Health Board to address the current clinical staff shortages impacting upon the service, bearing in mind the action taken by the Health Board thus far?

I will refer to the Health Board's recruitment attempts later. However, it is appropriate to provide a little more historical context about the situation and how things have developed locally up to the present date. Hopefully, this will give you a better understanding of the issue and more importantly why the council is now corresponding with you.



Mae Cyngor Gwledig Llanelli yn croesawu gohebiaeth yn Gymraeg neu yn Saesneg  
Llanelli Rural Council welcomes correspondence in Welsh or English





The current suspended 24/7 MIU service model was advocated and approved by former Health Minister, Professor Mark Drakeford, following the matter being referred to his office by the now defunct Hywel Dda Community Health Council. The matter was subject to judicial review, which failed. However, what the court proceedings helped achieve was to define the current service model, which has been operating at Prince Philip Hospital since 2013/2014. The council considers itself an important local stakeholder because the hospital is in its administrative area. When it comes to matters concerning Prince Philip, it has always endeavoured to function as a strong local voice in seeking to retain key hospital services. Indeed, the council sat on the original steering group, which oversaw the work programme leading to the MIU's inception and was present when Professor Drakeford made a formal visit to Prince Philip Hospital following the conclusion of the work. Subsequently, Welsh Government hailed the service model as an exemplar of good practice which other health boards were encouraged to follow going forward.

In terms of the here and now, the Health Board is currently carrying out a consultation seeking public views on the best model for the MIU following a temporary reduction in opening hours (from 24 hours a day to 12 hours a day) that was agreed by the Health Board in September 2024 and introduced on 1 November, 2024 for a period of six months, while options were developed for the MIU's future.

The urgent and temporary change to opening hours was made because of concerns about quality and safety, raised by Healthcare Inspectorate Wales (HIW). In addition to the safety and quality issues, there were a lack of doctors available to work overnight at the MIU, meaning the risk to safety was greater. There had been ongoing attempts to recruit doctors nationally, but it has not been possible to recruit enough doctors who are willing to work overnight at the MIU.

At the Public Board meeting held in March 2025, the Board considered if it could re-instate the 24-hours every day opening hours at the MIU. Board members decided, based on staffing pressures and that a robust 24-hour rota was not in place, that it could not return to the original opening hours. The Board agreed that the temporary change to opening hours of 12 hours a day seven days a week should remain until a long-term option could be implemented.

Since then, the Health Board has developed four options for the future operation of the service, and these are briefly described below:

Option 1 – a 12-hour doctor led unit.

This model is based on the current 12-hours a day, seven days a week doctor led unit, with a further two hours staffing to allow patients in the unit to be treated. This is in line with the temporary closure model that has been in place since 1 November 2024 and open from 8am to 8pm every day. The opening hours are based on reduced attendance numbers between the hours of 8pm and 8am, before the temporary change was introduced.

Option 2 – a 14-hour doctor led unit.

The option will operate the same as option one, but it will be open to the public for 14 hours; with a further two hours staffing to allow patients in the unit to be treated.

Option 3 – a doctor led phased option from 12 hours up to 24 hours.

This option will initially be open for the current 12 hours, with a further two hours staffing to allow patients in the unit to be treated. It will then move to 14 hours, with a further two hours staffing to allow patients in the unit to be treated, and ultimately 24 hours overall. If this option

is chosen, the phasing will be developed over time, but there will be a commitment to return to a 24-hour model, seven days a week as soon as it is safe and practical to do so.

Option 4 – urgent care centre (Same Day Urgent Care (SDUC) type model) 14 hours a day, seven days a week. This option will be a new way to deliver the service and will see the MIU, and the Same Day Emergency Care (SDEC) services come together. SDEC provides tests and treatments for adult patients with medical problems that do not require hospital admission and can be accessed via a patient's GP. This will allow for more injuries/illnesses that need attention urgently but are not critical or life threatening, to be seen and treated, than the current service offers.

Regarding the council meeting presentation, questions were raised about Prince Philip reverting to a full Accident and Emergency Service. Health Board officials explained why this was not feasible because the hospital lacked other essential specialist services needed to support an A&E service. This had been the case for many years, dating back prior to the introduction of the current MIU model and the Acute Medical Assessment Unit. Moreover, the practice of medicine was becoming more complex, and treatments and care had advanced to a point where sub specialist doctors are now needed. Subsequently members then referenced the clinical staff shortages being experienced by the Health Board especially in not being able to recruit enough doctors and GPs to staff the MIU. By way of reply, a doctor who worked in the MIU stated whilst additional staff had been recruited, there were still gaps in having the necessary cover in place for staff rotas. The other difficulty faced by the Health Board was that doctors and GPs were put off from joining the Health Board and working in the MIU because there was a growing tendency amongst younger job applicants and new recruits of not wanting to work anti-social hours. They were no longer prepared to work night shifts to support the 24/7 operation of the MIU. This is a major concern to the council.

Since the council meeting the council has corresponded with the Health Board about the actions taken thus far regarding its recruitment drive efforts to employ more doctors and GPs. A summary of the Health Boards response is set out below:

#### **“Recruitment**

“Recruitment to support the MIU, particularly for overnight cover, has been a longstanding challenge, reflective of wider workforce pressures across rural West Wales. That said, we were pleased to have successfully recruited at the end of 2024, which has enabled us to stabilise the daytime rota with consistent GP cover. However, we were not able to revert to a 24/7 model, when the Board met at the end March, as we still did not have sufficient workforce to safely cover the overnight shifts.

“Prior to this, we undertook multiple recruitment campaigns, including:

- National and regional advertising for GP and ENP roles.
- Engagement with medical schools and training bodies to promote rural placements.
- Use of targeted digital platforms and social media to reach potential candidate.

**Despite these efforts, uptake has been limited, particularly for unsocial hours, which contributed to the current temporary model.**

“The Health Board has also:

- Explored secondment opportunities from other Health Boards.
- Considered rota-sharing models across sites within Hywel Dda to reduce the burden of night shifts.
- Investigated the feasibility of overseas recruitment, though this is constrained by regulatory and onboarding timelines.

- Offered enhanced incentives for hard-to-fill posts, including relocation support and flexible working arrangements.

“Since the Board’s decision in March this year, to proceed to public consultation on the future service model, it would not be appropriate to actively recruit further at this stage. This is because we do not wish to predetermine outcomes of the process and do not yet know the final configuration of the service in terms of opening hours and required skill mix. It is important that any recruitment aligns with the agreed future model.

#### **“Key challenges and local factors**

There are several challenges and local factors that continue to affect recruitment:

- The rural location of the hospital can be a deterrent for some clinicians.
- Limited availability of locum cover for overnight shifts.
- A mismatch between the acuity of patient presentations and the scope of the MIU, with some patients requiring major care.
- Concerns raised by Healthcare Inspectorate Wales and the Nursing and Midwifery Council regarding clinical safety, particularly overnight when doctors were not available to support Emergency Nurse Practitioners.

“These factors led to the urgent and temporary change to opening hours in November 2024 and remain relevant as we consider future service models.

#### **“Future service models and community input**

As part of the current consultation, we are actively inviting communities to share alternative ideas for how the service could be delivered. If members of the council feel that the service could work differently, whether through a new staffing model, shared rota, or another approach, we would very much welcome this as a proposed option. All suggestions will be considered alongside the four options currently presented, and we are keen to ensure that local insight helps shape the final decision.

“We hope this information is helpful in supporting the council’s next steps.

As ever, we are committed as a health board to working transparently and collaboratively with our communities, as we move through this consultation process.”

Considering the Health Board’s reply, the council asks whether Welsh Government can offer further assistance to the Health Board, particularly to help address the key challenges and factors it refers to above please? Your views on the points raised by the Health Board are particularly welcome - thanks.

As a local stakeholder the council believes it is better placed to ask this question direct to Welsh Government, as opposed to the Health Board pressing for more support. Indeed, the council has some ideas it wishes to flag-up to try and help recruit more doctors and GPs and which may be introduced nationally. These are set out below for your consideration.

Is it possible for Welsh Government to introduce measures to try and attract doctors and GPs to work in rural areas? For example, in local government, national employers have introduced a scheme commonly referred to as London Weighting, which is an additional payment made by some employers to employs who work in London, designed to offset the higher cost of living in the city compared to the rest of the UK. Could, Welsh Government introduce an additional payment scheme called ‘Rural Weighting’, to incentivise clinical staff to work in rural areas, to combat the present difficulties by make working in rural areas more appealing financially? Introducing such an incentive nationally, would provide health boards with the

justification to pay clinical staff more money to attract them to work in rural parts of Wales. The council would welcome your views on this please.

Secondly, and in addition to the above, is it possible to review the current set of parameters controlling recruitment policy from overseas clinicians. A relaxation of the rules will widen the pool of applicants to help combat clinical staff shortages. Again, your views are welcomed on whether this is something Welsh Government can help orchestrate.

Finally, the council has yet to determine and reply to the current Health Board consultation options, which expires on 22 July 2025. However, it hopes to do so pending your considered reply. It may be through additional Welsh Government assistance and support that the council is able to advocate a further option to help safeguard and enhance the current service model, importantly facilitated by wider Welsh Government recruitment support measures.

Thank you for considering this matter. The council looks forward to considering your reply.

Yours sincerely

A handwritten signature in dark ink, appearing to read 'Mark Faltham', written in a cursive style.

Clerk to the Council

**Llanelli Rural Council**  
Full Council Meeting  
9 September 2025

Pictures taken of damage at new play areas at Parc y Gwili, Canolfan Llwynhendy and  
Penygraig play area





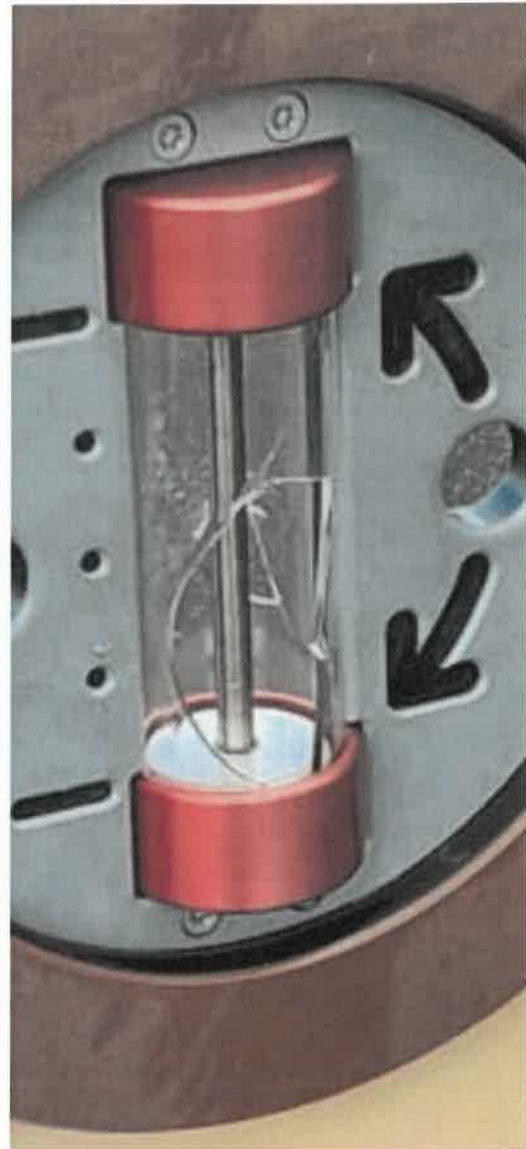




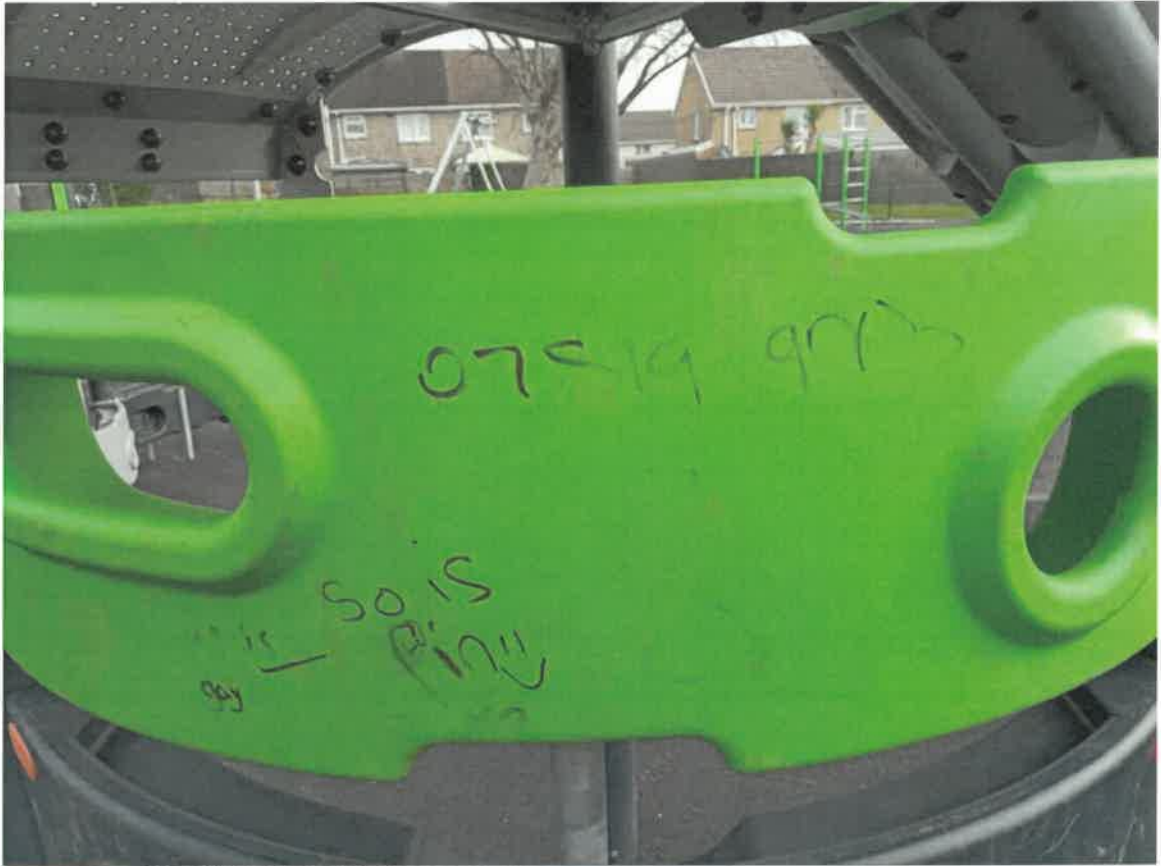












## THE MOST IMPORTANT CONSULTATION IN A GENERATION OF WELSH RUGBY

**This last fortnight has marked a pivotal moment for Welsh rugby with the announcement of a formal consultation and public engagement on the future structure and funding of elite rugby in Wales**

We are very aware that this is the most comprehensive and consequential review of our professional game in a generation, and it will shape the future of our national teams, our professional clubs, our elite pathways and our ambitions as the governing body for rugby in Wales and to that end we can't make our recommendations without your input.

On the 20th of August we published a [\*\*detailed consultation document\*\*](#) which included 90 pages of analysis, options and proposals.

This document sets out a bold vision for change. It is transparent, evidence-based, and open to scrutiny. But it is not a final decision. It is a starting point for a national conversation. A conversation around a comprehensive and integrated proposal which we believe provides a serious, ambitious, optimal route forward.

### **What is happening and why?**

The WRU is carrying out a thorough consultation with all key stakeholders. This includes the four professional men's clubs, the Professional Rugby Board (PRB) the Welsh Rugby Players Association (WRPA), players (both senior men's and women's) and the Supporters' Groups associated with the four professional sides,

the WRU Council and representatives of the United Rugby Championship (URC).

We will also be engaging with the wider public and fans directly, with everyone throughout Wales and elsewhere with an interest in Welsh rugby encouraged to complete our online engagement survey.

The reason is simple: we don't believe the current system is delivering. Our national teams are underperforming. Our professional clubs are also not where we would all want them to be. Our talent pathways need to be further improved and aligned. And our financial model has not produced sustainable success.

We believe transformational, ambitious change is needed. But we also believe that change must be shaped by those who live and breathe Welsh rugby

## **What you can expect?**

Over the next four weeks, we will be running a programme of meetings, engagements and a public engagement survey. Each week, we will look to provide further clarity by publishing further information, which will include:

- \* **What is happening that week** and who we have met
- \* **Explainer sheets** to recap on key elements of the consultation proposal
- \* **Backgrounder documents** on changes already made during the last two years so that the context to the consultation is clear and consistent for everyone wanting to take part

\* FAQs that address the common questions we are getting asked (and the answers we are giving)

We do not intend introducing new proposals outside the consultation document during this period. But throughout this time, we will help build understanding of what's already been published by providing regular updates on progress and explainers to help simplify the proposed changes.

**The Public engagement survey is now live on the WRU website** (Click [here](#) to access)

As well as formal meetings with key organisations we want to hear from Welsh rugby fans. So, our public survey is now live. It will take around 15 minutes to fill in and we would like as many people as possible to share their views with us. At the end of the process, we will publish a summary of the feedback as part of the overall consultation results.

**What you will see over the next few weeks. And what you won't**

Over the next few weeks, you will see:

- \* A structured, comprehensive consultation process with all key stakeholders
- \* A commitment from us to transparency and to listening
- \* Regular information and updates which aim to clarify and provide context to elements of the consultation document
- \* Opportunities to engage and share views



## **You will not see:**

- \* New proposals introduced outside the published document
- \* A detailed account of each meeting – we will respect the confidentiality of what people tell us
- \* Closed-door decision-making – once decisions are made, we will explain them openly

## **The consultation timeline**

*20 August* – Consultation document released online

*01 September* – Official consultation period starts, and public engagement survey released

*26 September* – Consultation period ends

*Mid-October* – Recommendations report sent to WRU Board

*End of October* – Expected final decision announced by WRU Board

## **Our commitment**

We are here to listen. We want to understand your perspectives, hear your concerns, and learn from your ideas.

At the end of the consultation period a recommendation will be made to the WRU Board. The Board will then consider all inputs and reach a decision which will be communicated transparently to all stakeholders and the public.

## **Our message**

\* We don't believe sticking with the status quo is an option. We don't believe the current system is working properly for Welsh rugby.

\* We want Wales to win again – at all levels of the game.

\* We have published our thinking. Now we want to hear yours. Please engage with us

\* Together, we can build a stronger, more successful future for Welsh rugby.

Diolch, The Welsh Rugby Union

---

**From:** Cllr. Jason Lovell <[Jason.Lovell@llanelli-rural.gov.uk](mailto:Jason.Lovell@llanelli-rural.gov.uk)>

**Sent:** 01 September 2025 15:22

**To:** Mark Galbraith <[Mark.Galbraith@Llanelli-Rural.gov.uk](mailto:Mark.Galbraith@Llanelli-Rural.gov.uk)>; Cllr. Andrew G. Stephens <[Andrew.Stephens@llanelli-rural.gov.uk](mailto:Andrew.Stephens@llanelli-rural.gov.uk)>

**Subject:** Re: Scarlets agenda item for next full council meeting - Support Scarlets to retain pro rugby in Llanelli

Hi Mark, looks like the deadline for the end of the consultation period for organisations/councils to have a discussion on the WRU pro rugby reorganisation is September 26th . The next full council meeting is on September 9th so that would be the last opportunity to discuss this before that deadline date.

I have spoken to Andrew and he is very Happy to support the Scarlets with Parc Y Scarlets located in his ward and propose and I would be happy to second a form of words if members were in agreement to show support to the scarlets fight to remain being a WRU funded pro rugby team based in Llanelli.

So could this agenda item be added to the next full council meeting agenda please ? As the Scarlets are such and important part of Llanelli's culture and history and is a big employer in the town, Many Thanks Jason.

Sent from Outlook for Android

## ITEM 7(2)

LLANELLI RURAL COMMUNITY COUNCIL	
DATE	03 SEP 2025
FILE REF.	
PASSED TO	CL

---

**From:** Delyth Jones <Del@llanellitowncouncil.gov.uk>  
**Sent:** 02 September 2025 16:22  
**Cc:** Dylan Sion-Thomas <SionT@llanellitowncouncil.gov.uk>  
**Subject:** Save the Scarlets

Dear all,

We hope this email finds you well.

You will be aware that the Welsh Rugby Union are currently consulting on the future of the Professional Rugby Game in Wales.

A campaign has therefore been launched to ensure the future of our own Llanelli Scarlets which is supported by Llanelli Town Council. A demonstration of the Town's support for the Scarlets is being arranged at Parc y Scarlets for the game against Munster on Saturday the 27<sup>th</sup> September, if your organisation is interested in taking part in this event then let us know.

The Scarlets are looking at getting as many as they can to Parc Scarlets on the day.

Full details are not yet available, however your attendance would be greatly appreciated if at all possible.

We look forward to hearing from you and will provide further details when these are confirmed. As I am away on leave now can you contact the Town Council "Enquiries" <enquiries@llanellitowncouncil.gov.uk> box.

Many thanks

Del

*Delyth Jones CILCA*

Principal Officer Llanelli Town Council

CILCA

Cyngor Tref Llanelli - Llanelli Town Council

Ffôn/Tel: (01554) 774352

Ebost/Email: [del@llanellitowncouncil.gov](mailto:del@llanellitowncouncil.gov)



Dilynwch Ni / Follow Us :



03 SEP 2011	3140
	FILE REB
	BY 032249



LLANELLI RURAL COMMUNITY COUNCIL	
DATE	- 2 SEP 2025
FILE REF.	
PASSED TO	CL

Friday, 22<sup>nd</sup> August 2025

Dear BID Member

**Re: Ymlaen Llanelli's Annual General Meeting**

**17:00 on Tuesday, 16<sup>th</sup> September, Llanelly House**

You are warmly invited to attend Ymlaen Llanelli's AGM. The meeting is the ninth of the organisation. As a not-for-profit company run for and by businesses, the Business Improvement District (BID) is focused on creating the right environment for your business to thrive. Its success depends on the input and participation of its member businesses and it is important that you make your views known and put forward your ideas for your BID.

The AGM provides an opportunity for you to have your say on the make-up of the management board for the Ymlaen Llanelli BID and hear the latest on its development and programme of improvements and its second renewal ballot due to take place in October 2025. We are always pleased to meet with businesses to discuss their needs and their concerns if they have any.

At the AGM, there is also a chance for you to join the company, if you have not already done so. We treat all levy payers as members in effect but formally joining the company allows you to vote at the AGM and be nominated to become a director of the company. All levy payers have the right to join the company and non-levy payers can apply to join at the discretion of the board.

All members are eligible to stand for the board and/or to nominate another member. Nomination should be made in writing, stipulating the particulars of the nominee such as name address and details of any other directorships, and addressed to: Ymlaen Llanelli, unit 23, St Elli Shopping Centre, Llanelli, SA15 1SH.

Accounts for the year can be found on our website: [www.ymlaenllanelli.com](http://www.ymlaenllanelli.com) or a copy can be requested from BID Manager Mandy Jenkins [mandy.jenkins@themeans.co.uk](mailto:mandy.jenkins@themeans.co.uk).

I look forward to seeing you on 16<sup>th</sup> September 2025.

Lesley Richards

Chair, Ymlaen Llanelli

## NOTICE OF THE 2025 ANNUAL GENERAL MEETING

-of-

**Ymlaen Llanelli**

**(Registered number 10122299)**

NOTICE IS HEREBY GIVEN that the 2025 Annual General Meeting of the above-named Company will be held at Llanelly House on Tuesday, 16<sup>th</sup> September at 5pm precisely for the following purposes:

### **Ordinary business**

Resolution 1: To receive and adopt the Accounts of the Company for the year ended 31<sup>st</sup> March 2025 together with the Reports thereon of the Directors and the Auditors of the Company.

Resolution 2: To reappoint Harris Bassett as Auditors of the Company until the conclusion of the next General Meeting at which accounts are laid before Members and to authorise the Directors to determine their remuneration.

### **Special business**

As special business, to consider and if thought fit, pass the following Resolutions which will be proposed as Ordinary Resolutions.

#### ORDINARY RESOLUTIONS

Resolution 3: THAT Juliet Campbell appointed as a Director of the Board pursuant to Article 25.7 of the Company's Articles of Association (and who is recommended by the Directors for reappointment at the meeting) be reappointed as a Director of the Company until due to retire by rotation pursuant to the Company's articles of association.

Resolution 4: THAT Martin Blackwell who retired by rotation at this meeting be reappointed as a Director of the Company until such time as she is required to retire by rotation pursuant to the Company's articles of association.

Resolution 5: THAT Peter Phillips who retired by rotation at this meeting be reappointed as a Director of the Company until such time as she is required to retire by rotation pursuant to the Company's articles of association.

Dated: 22<sup>nd</sup> August 2025

BY ORDER OF THE BOARD

Secretary, Registered office: Unit 23, St Elli Shopping Centre, Llanelli, SA15 1SH

**NOTES:**



1. Any member of the Company entitled to attend and vote at the meeting is entitled to appoint a proxy to attend and, on a poll, vote instead of that member. A proxy may demand, or join in demanding, a poll. A proxy need not be a member of the Company.
2. To be valid the instrument appointing a proxy and any authority under which it is executed (or a copy of the same certified notarially) must be deposited at the registered office of the Company not less than 48 hours before the time of the meeting.

## Ymlaen Llanelli Board Members 2025

Category	Name	Organisation	Status
Large Business	Matthew Harvey	Specsavers	Reappointed by membership at AGM 2024
	Lesley Richards	Nationwide	Reappointed by membership at AGM 2023
Small Business	Adrian Davies	Lloyd & White	Reappointed by membership at AGM 2023
	Lee Edmunds	Evans & Powell	Reappointed by membership at AGM 2023
	Peter Phillips	New Drivers	Appointed by membership at AGM 2021
	Carla Shepherd	Primavera	Appointed by membership at AGM 2024
	Juliet Campbell	Bradley's Coffee	Special resolution to appoint by membership at AGM 2025
Landowner	Alun Littlejohns	St Elli Shopping Centre	Appointed by membership at AGM 2024
Large business – voluntary member	Marti Blackwell	The Works	Reappointed by membership at AGM 2022
Resident	Andrew Stephens	Resident	Reappointed by membership at AGM 2024

**FORM OF PROXY  
YMLAEN LLANELLI**

**FOR USE AT ANNUAL GENERAL MEETING CONVENED FOR 16<sup>th</sup> SEPTEMBER 2025**

I/We \_\_\_\_\_ of \_\_\_\_\_ being a member/members of Ymlaen Llanelli ("the Company") whose registered office is at Unit 23, St Elli Shopping Centre, Llanelli, SA15 1SH 1UH APPOINT [the Chairman of the Meeting] \_\_\_\_\_ of \_\_\_\_\_ or, failing that person, \_\_\_\_\_ of \_\_\_\_\_] (*note 3*) as my/our proxy to vote for me/us on my/our behalf at the 2025 Annual General Meeting of the Company pursuant to the notice of that meeting to be held on Tuesday, 16<sup>th</sup> September, and at every adjournment of it. I/We direct my/our proxy to vote (or abstain from voting) as he/she thinks fit on any of the resolutions submitted to the Meeting where no specific direction is given or on any other business which may properly come before the meeting.

RESOLUTION	FOR	AGAINST
Resolution 1: Accounts		
Resolution 2: Harris Bassett		
Resolution 3: Juliet Campbell		
Resolution 4: Martin Blackwell		
Resolution 5: Peter Phillips		

Signed

\_\_\_\_\_  
The Appointor/s.

Name/s

Dated

**Notes:**

1. Put only the address of the first of joint members, but any joint member may appoint a proxy.
2. Any member of the Company entitled to attend, speak and vote at the above-mentioned meeting may appoint a proxy to attend, speak and, on a poll, vote instead of that member. A proxy may demand, or join in demanding, a poll. A proxy need not be a member of the Company, but must attend the meeting in person in order to represent you.
3. If it is desired to appoint any other person as proxy, delete "The Chairman of the Meeting" and insert the name of your proxy.
4. If this form is returned without any indication as to how the proxy shall vote, the proxy will be free to vote on any particular matter as he or she thinks fit, or to abstain from voting. Please initial all alterations made to this form and you may wish to fill in the space above to indicate your voting intentions.
5. To be valid this proxy form and any authority under which it is executed (or a copy of the same certified notarially) must be deposited at the registered office of the Company not less than 48 hours before the time of the meeting.
6. An individual member or attorney therefore must sign this form. If the appointor is a corporation, this form must be executed as a deed, or signed by a person duly authorised in that behalf. Evidence of that authority must be produced. If the appointor is a firm, please sign in the firm's trading name and add 'by John Smith], [position] in the said firm'.

### Schedule of reported matters by Members

Item No.	Date	Facility	Raised by	Description	Action	Matters Resolved/ Outcome
1	05/08/2025	Path to Saron Hall	Cllr T. M. Donoghue	The paved area on the way in to Saron hall is uneven and some of the slabs are cracked and a potential trip hazard.	DLO	Work scheduled for September 2025.
2	27/08/2025	Street light	Cllr S. R. Bowen	Street light out of order near old Swiss Valley shop at junction of Heol Nant and Heol Beili Glas.	CCC	email sent to CCC.



LLANELLI RURAL COMMUNITY COUNCIL	
DATE	15 JUL 2025
FILE REF.	
PASSED TO	CL.

Dafen Primary School/Ysgol Gynradd Dafen  
Lôn Yr Ysgol  
Dafen  
Llanelli  
Carmarthenshire  
SA14 8LL

Tel No./Rhif Ffon: 01554 773290  
Email/Ebost: [admin@dafen.ysgolccc.cymru](mailto:admin@dafen.ysgolccc.cymru)  
Website/Gwefan: [www.dafenschool.co.uk](http://www.dafenschool.co.uk)

Acting Head Teacher/Pennaeth Dros Dro  
Mrs M Davies

08<sup>th</sup> July 2025

Mark Galbraith  
Llanelli Rural Council  
Vauxhall  
Llanelli,  
Carmarthenshire  
SA15 3BD

Dear Mark Galbraith,

On behalf of everyone at Friends of Dafen PTA, I would like to extend our heart out thanks to Cllrs. R.E. Evans, S.N. Lewis and A.J. Rogers, for kindly donating £200 to our fundraising during the school year of 2024/2025.

Thanks to the generosity and the support they have shown. We are thrilled to share that we have used the money that you donated to help lower the cost of an end of term trip for the children in school. The donation you gave was put towards the cost of hiring the buses to transport the children and enabled us to lower the trip costs to parents.

As a small school, the PTA plays a crucial role in fundraising to help cover the costs of things that are sadly outside the school budget; without the help and donations that are received by the above name Rural Councillors and others we would not be able to help families and children within our school, in the way we strive to do.

Their support is more than financial - it sends a strong message to both the children, parents and guardians that they are part of a community that values and believes in them.

Thank you again for your continued support

With with warmest regards

Lindsey Francis (Chairperson)

Friends of Dafen SchoolPTA

3 Llaneriew Close  
Furnace  
Llanelli  
SA15 30G.

LLANELLI RUDDAS COMMUNITY COUNCIL	
DATE	16 JUL 2025
FILE REF.	
PASSED TO	CL

8<sup>th</sup> July 2025

Dear Alexandra,

I am writing on behalf of the Phoenix Theatre Group to thank the Chairman for the very kind donation following our recent production, 'Outward Bound'.

Our next production will take place in October & I will be in touch once details are available.

Best wishes

Ruth

**Alexandra Einon**

**From:** Llanelli Treasurer <Llanelli.Treasurer@rbl.community>  
**Sent:** 19 August 2025 19:05  
**To:** Alexandra Einon  
**Cc:** Llanelli Chair; SWWales Vice Chair; Llanelli Secretary  
**Subject:** Re: Information regarding Chairman's donations

Hello

Apologies for the delay in sending this email to yourself, I have been on leave.

I would like to thank the Llanelli Rural Council, on behalf of the Royal British Legion - Llanelli Branch, of your kind donation of £115 and than you for your continued support to the military veteran community of Llanelli.

Kindest Regards  
 Estelle

Estelle Evans  
 Llanelli Branch Treasurer  
 M: 0790 380 4781  
 E: [Llanelli.treasurer@rbl.community](mailto:Llanelli.treasurer@rbl.community)



LLANELLI RURAL COMMUNITY COUNCIL	
DATE	20 AUG 2025
FILE REF.	
PASSED TO	CL



[rbl.org.uk](http://rbl.org.uk)

Follow us   