

CYNIGION YMGYNGHORIAD CYMUNEDOL

Canolfan Llwynhendy a Chaeau Heol Gwili



Llwynhendy Hub & Gwili Fields

PROPOSALS COMMUNITY CONSULTATION



Pam Ydym Ni Yma? - Why We Are Here?

Ym mis Ionawr 2020, cychwynnodd Cyngor Gwledig Llanelli, gyda chefnogaeth rhaglen Fuddsoddi Lleol Llwynhendy Ni (a gyllidir gan Gronfa Gymunedol y Loteri Cenedlaethol) ar astudiaeth ddichonoldeb ar gyfer Caeau Heol Gwili. Bydd yn edrych ar y llecyn gwyrdd ac ar ganolfan gymunedol bosibl a fydd yn ategu'r gwasanaeth llyfrgell presennol, gan adeiladu lle ychwanegol i gynnal weithgareddau amrywiol a gwasanaethau a fydd yn helpu gwella llesiant i bob grŵp oedran.



In January 2020 Llanelli Rural Council, with the support of Our Llwynhendy Invest Local programme (funded by The National Lottery's Community Fund) has commenced a feasibility study for Heol Gwili Fields. It will look at the green space and a potential community hub that will complement the existing library service, whilst building extra space to host various activities and services that will help improve local well-being for all age groups.

Mae Chris Jones Regeneration wedi cael eu penodi i gynnal yr astudiaeth ddichonoldeb gyda nifer o gyfleoedd i drigolion lleol a grwpiau cymunedol i baratoi cynlluniau a lluniau ar gyfer y safle a hefyd ystyried sut y byddent yn defnyddio'r llecyn a'r ganolfan.



Chris Jones Regeneration have been appointed to undertake the feasibility study with a number of opportunities for local residents and community groups to shape plans and drawings for the site and also consider how they would use the space and hub.



Gwrandawyd ar y gymuned dros y ddeng mlynedd ddiwethaf

Mae'n ymwneud â throi syniadau'n gynlluniau

Mae'n gam ymlaen tuag at sicrhau'r arian

Ein nod yw gwella'r llyfrgell a'r caeau i'r gymuned gyfan

The community has been listened to over the last ten years

Its about turning issues and ideas into plans

It's a step forward in securing the money

Our goal is to enhance the library and fields for the whole community

Proses - Process





Canolfan Llwynhendy A Chaeau Heol Gwili Llwynhendy Hub & Gwili Fields

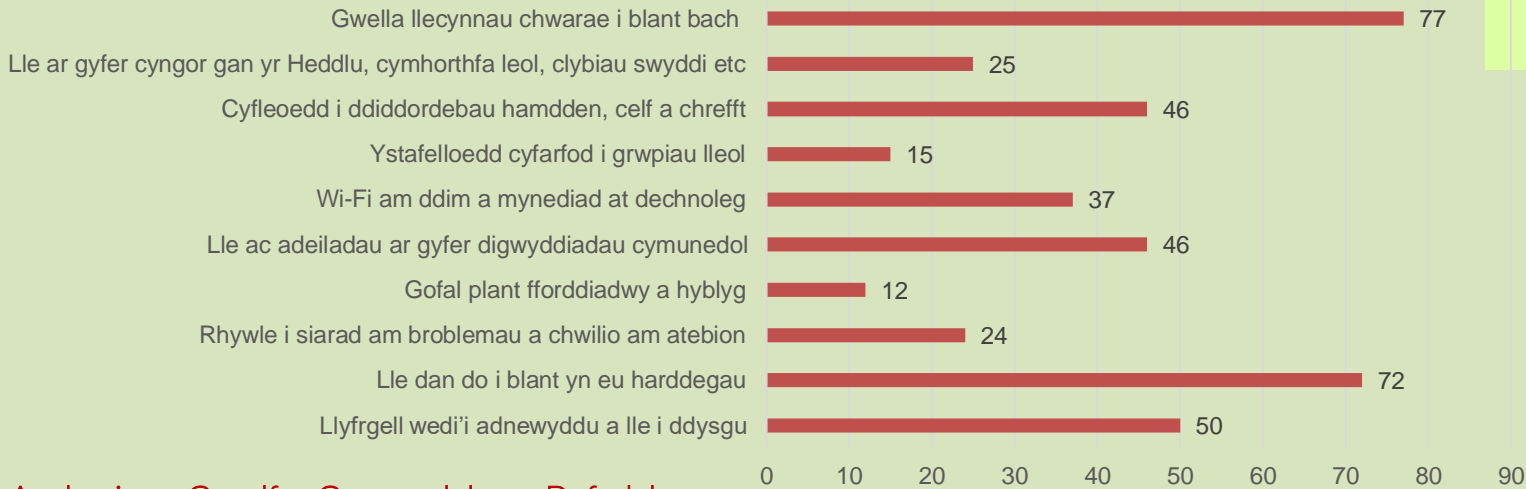


Ystyriaethau a Chyfleoedd i'r Llyfrgell a'r Cae - Eich Ymateb Chi

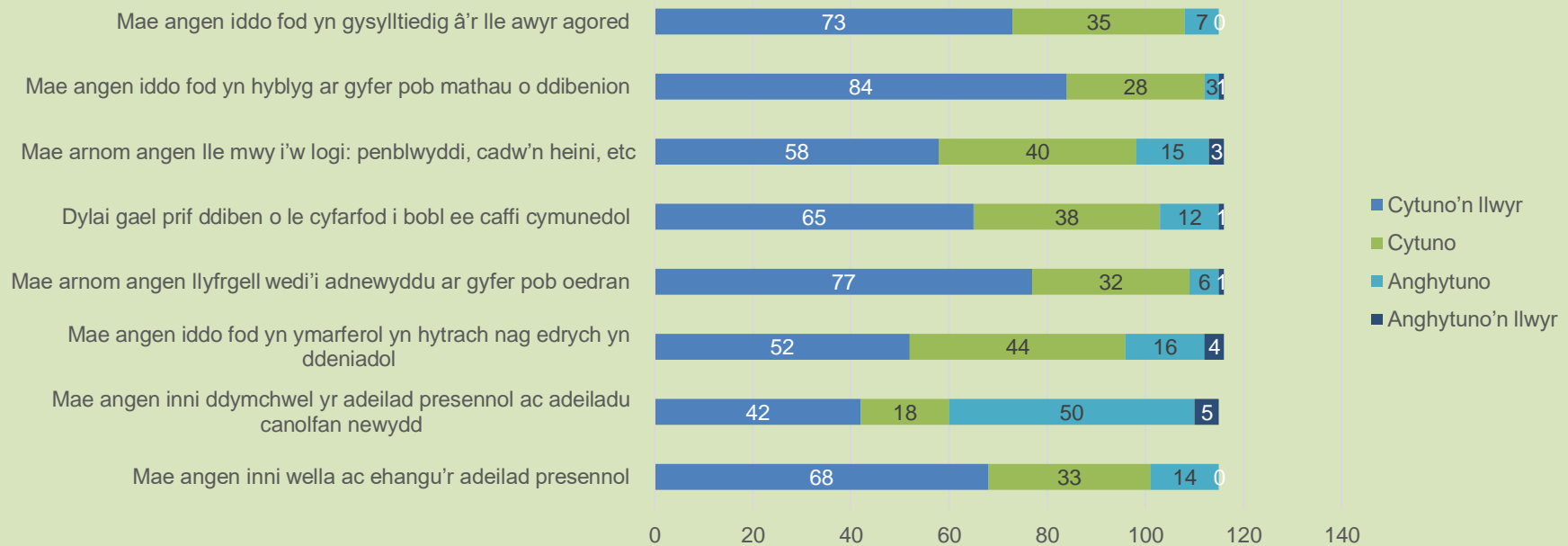
Ym mis Ebrill 2020, buom yn holi barn y gymuned leol wrth drafod yr ystyriaethau a'r cyfleoedd ar gyfer y Llyfrgell a'r Cae, yn benodol beth sydd angen ei gynnwys yn y Ganolfan newydd ac ar y Cae. Yn sgil Covid-19 bu'n rhaid inni ddefnyddio gwefan Cyngor Gwledig Llanelli i wahodd ymatebion gyda ffilm fer a oedd yn holi cwestiynau i'r gymuned. Dyma'r canlyniadau.



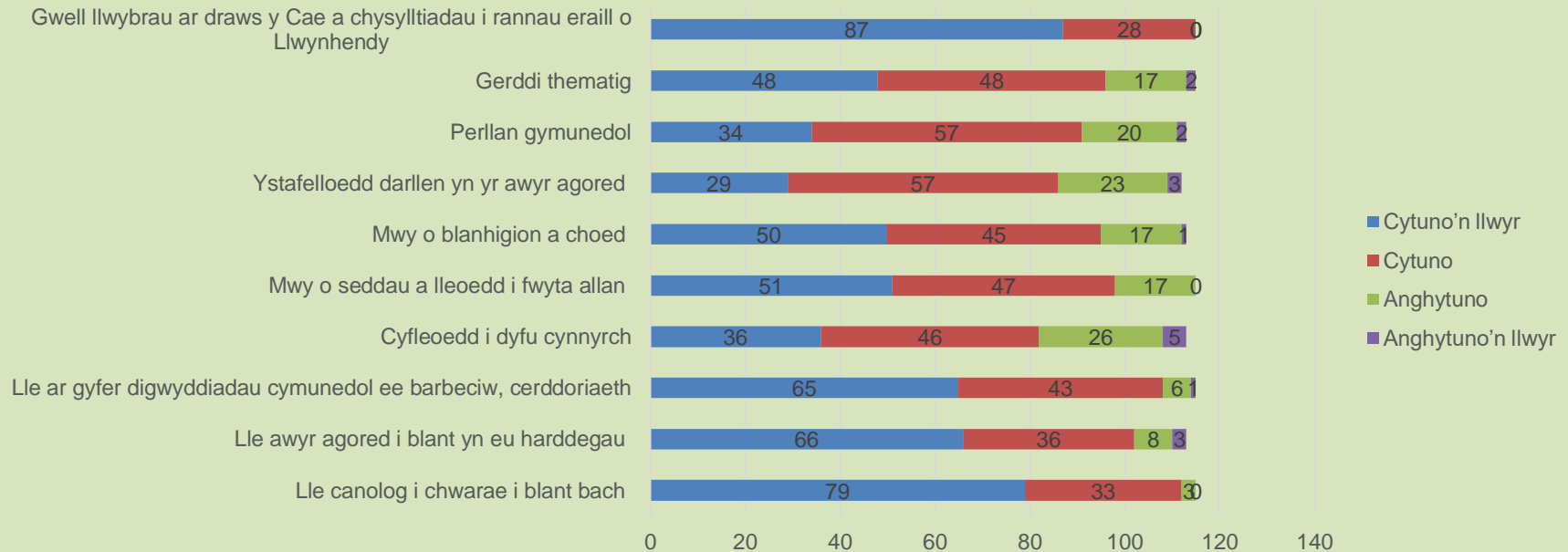
Ystyriaethau ac Anghenion Allweddol



Anghenion y Ganolfan Gymunedol yn y Dyfodol



Anghenion y Cae yn y Dyfodol





Canolfan Llwynhendy A Chaeau Heol Gwili Llwynhendy Hub & Gwili Fields

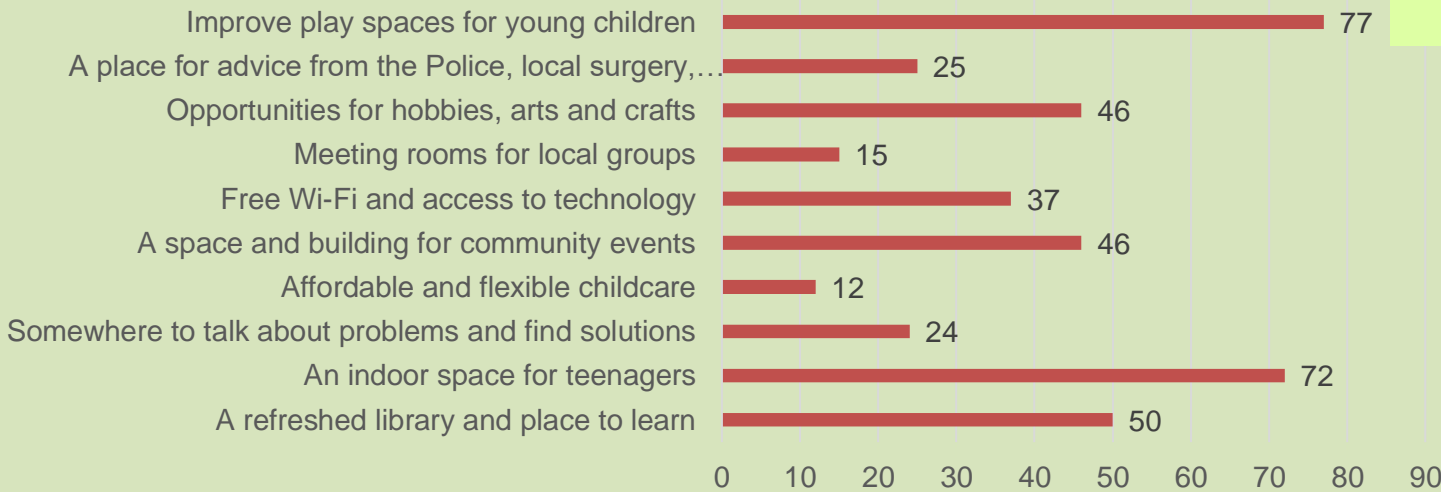


Issues & Opportunities for the Library and Field – What You’ve Told Us

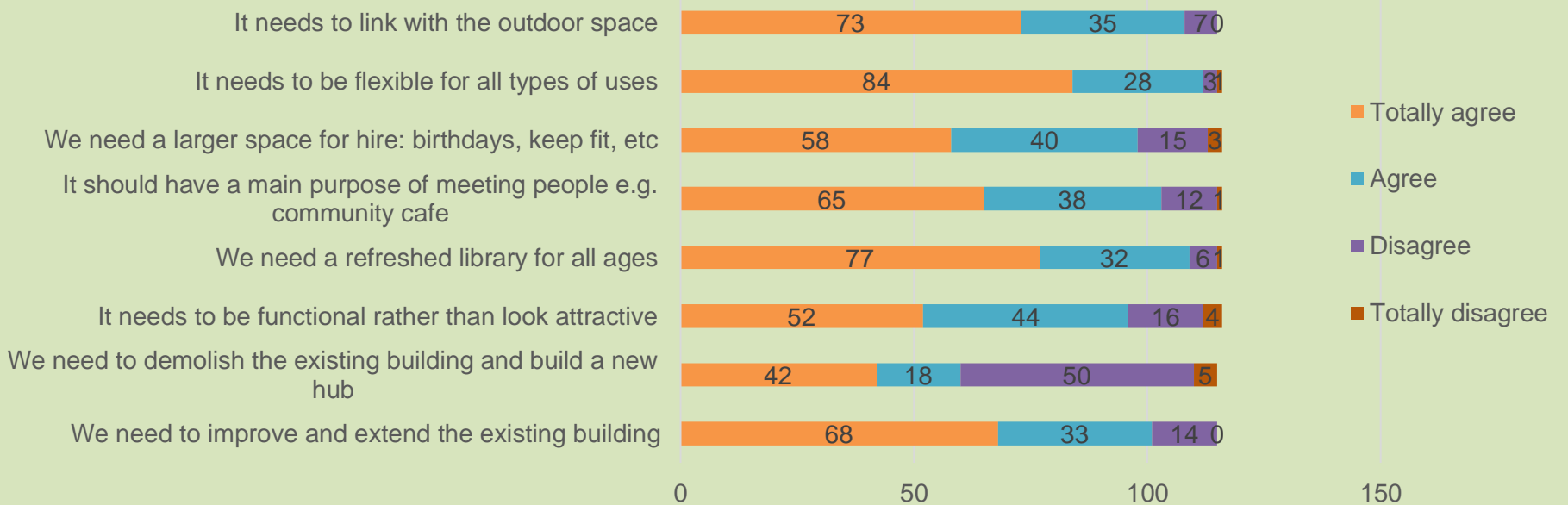
In April 2020, we sought views from the local community on those issues and opportunities for the Library and Field, specifically to ask what needs to go into the new Hub and onto the Field. Due to Covid-19 we had to use Llanelli Rural Council’s website to seek views with a short film shown that asked questions from the community. These are the results.



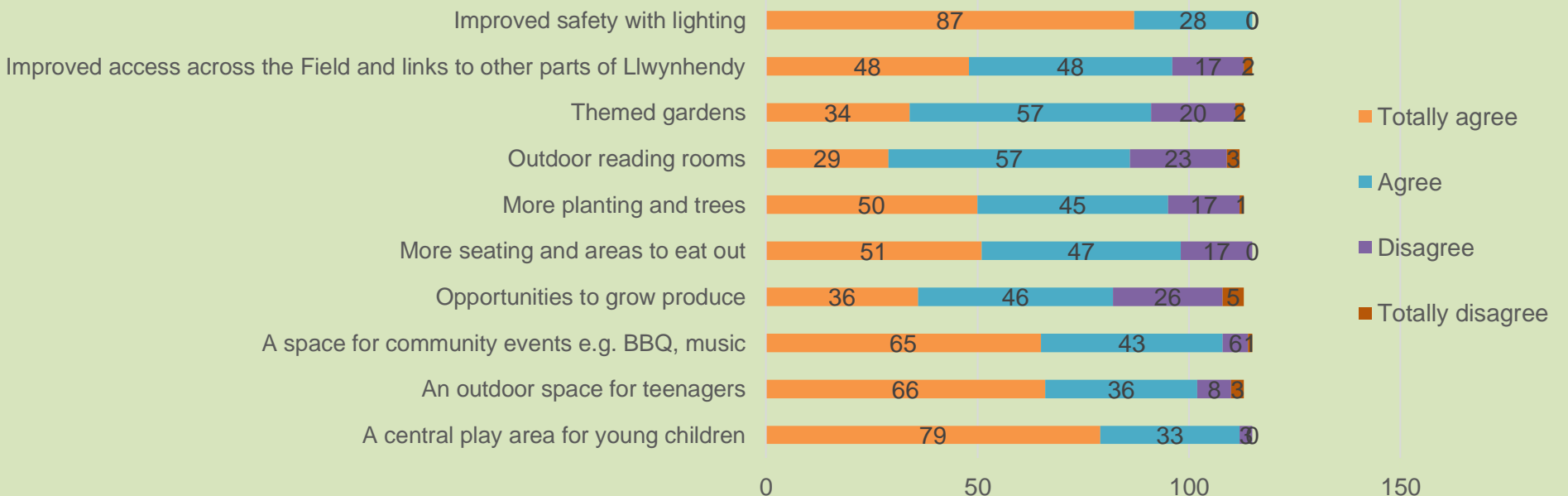
Key Issues and Needs



Future Community Hub Needs



Future Field Needs





Dewisiadau a Chynigion ar gyfer y Ganolfan Gymunedol Options and Proposals for the Community Hub

Yn yr ymgynghoriad fis Ebrill, roeddech chi'n dweud:

- Peidiwch â dymchwel adeilad presennol y llyfrgell, ond ei wella a'i ehangu
- Crewch adeilad hyblyg a all addasu i anghenion y gymuned
- Mae angen i'r Ganolfan gysylltu â'r Cae y tu allan

From the April consultation you told us:

- Don't demolish the existing library building but enhance and extend it
- Create a flexible building that can adapt to the needs of the community
- The Hub needs to link into the Field outside

Dibenion/Gweithgareddau'r Ganolfan Gymunedol

- Llyfrgell wedi'i hadnewyddu
- Caffi cymunedol
- Lle cyfarfod
- Lle am gyngor – tai, iechyd, heddlu
- Lle i bobl ifanc
- Ystafelloedd am sgwrs bersonol
- Ystafell fawr ar gyfer digwyddiadau y gellir ei is-rannu
 - Gweithgareddau celf a chrefft
 - Partïon penblwydd
 - Digwyddiadau cymunedol
- Mwy o le storio
- Gwell toiledau a chyfleusterau newid

Community Hub Uses-Activities

- A refreshed library
- A community café
- Meeting space
- A place for advice – housing, health, police
- A space for young people
- Rooms for a personal chat
- A large function room that can be sub-divided
 - Arts and crafts activities
 - Birthday parties
 - Community events
- More storage
- Improved toilet and changing facilities



*Golwg o'r awyr o adeilad y Ganolfan Gymunedol
A bird's eye view of the Community hub building*



*Golygfa o ochr Heol Elfed
View from Heol Elfed side*



*Golygfa o safle'r maes parcio presennol
View from the existing car park area*



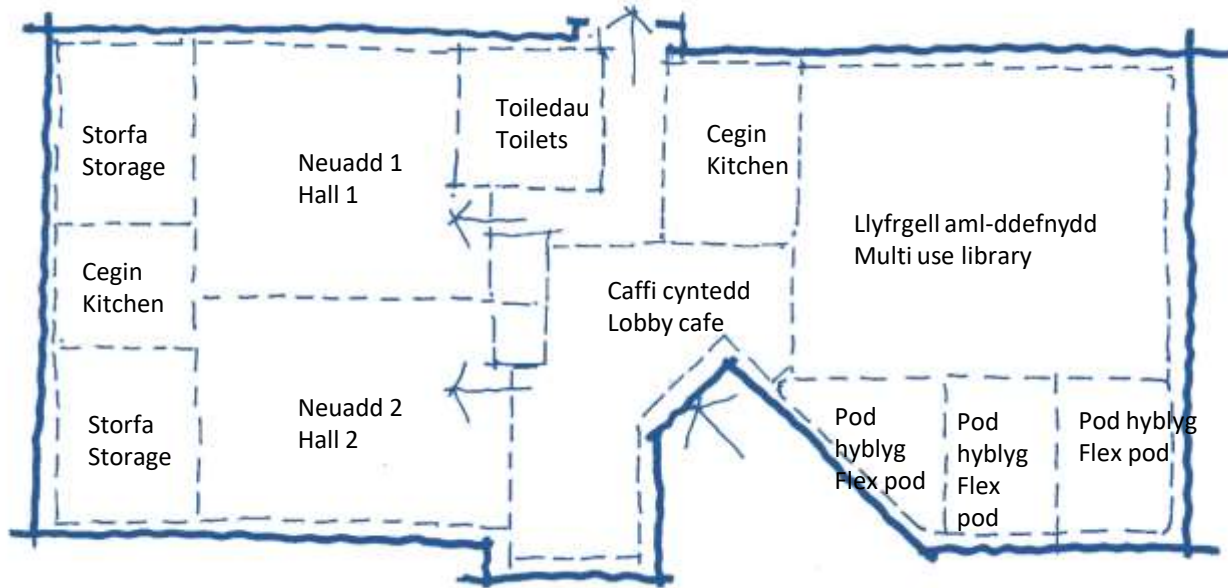
*Y brif fynedfa a'r adeilad cyswllt rhwng y llyfrgell bresennol a'r estyniad newydd
Main entrance and link building between existing library and new extension*



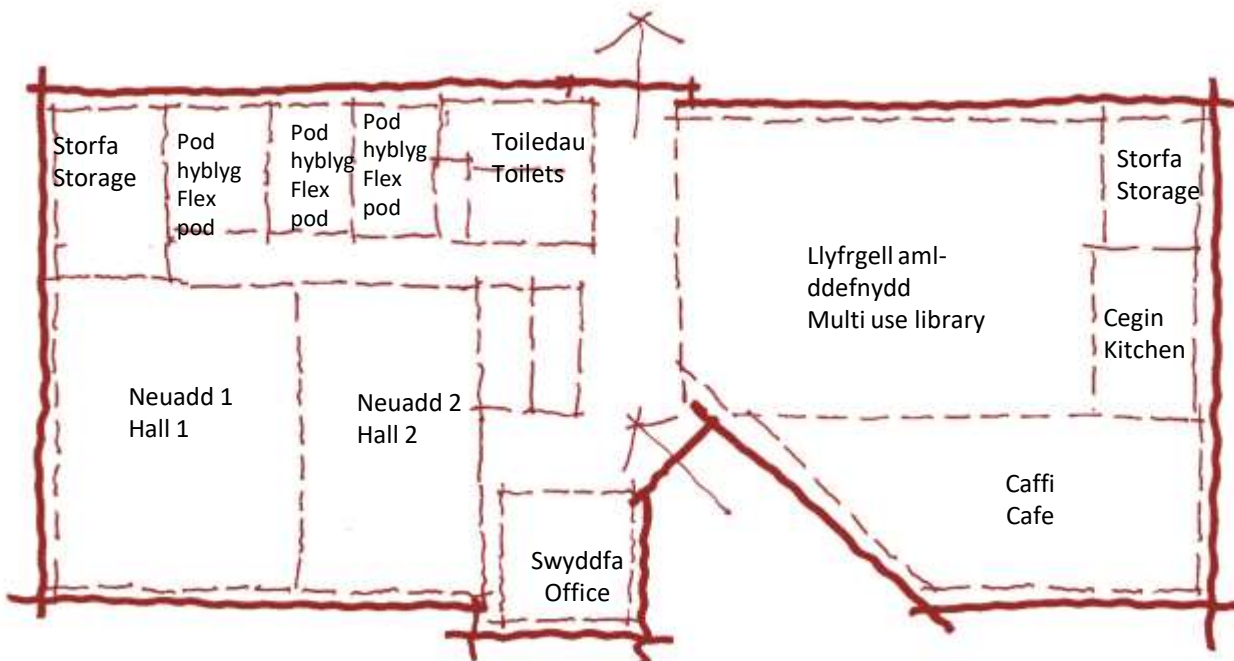
Dewisiadau a Chynigion ar gyfer y Ganolfan Gymunedol Options and Proposals for the Community Hub

Dewisiadau-Options

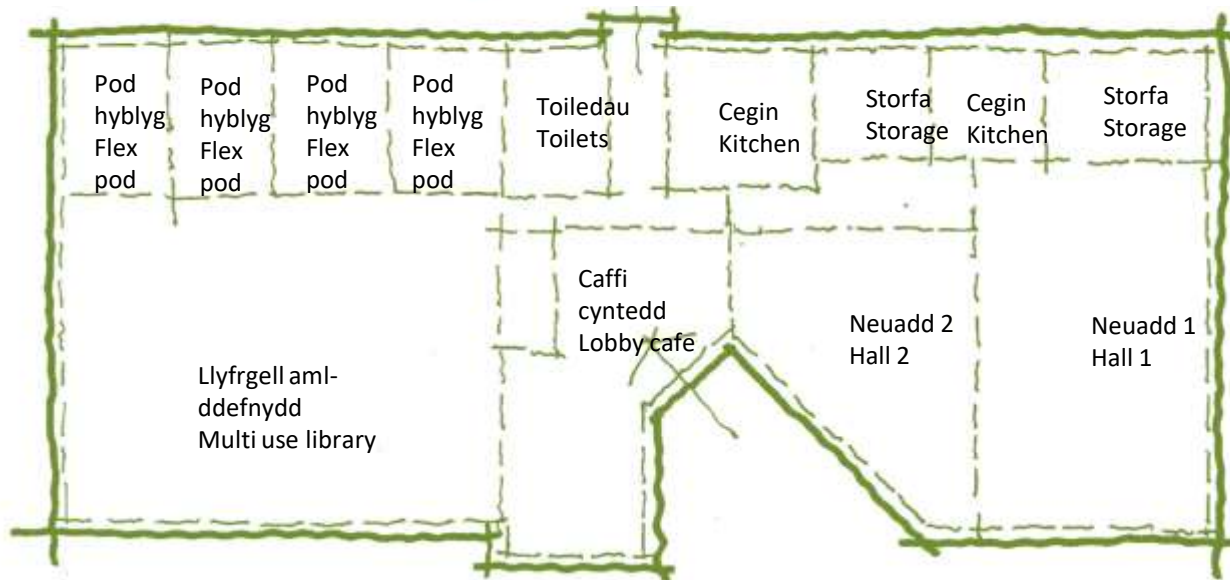
Dewis 1-Option 1



Dewis 2-Option 2



Dewis 3-Option 3





Dewisiadau a Chynigion ar gyfer y Ganolfan Gymunedol Options and Proposals for the Community Hub

Dewis 4 – I roi syniad ichi o sut y byddai'n edrych mewn ffurf dyluniad graffig, rydym wedi llunio hyn ar Ddewis 4. Yn yr un modd, byddai'r un peth yn wir am ddeusiadau 1, 2 a 3 uchod.
Option 4 - To give you an idea of what it would look like in graphic design form, we have drawn this on option 4. Equally, the same would apply to option 1, 2 and 3 above.

Dewis 4 – Option 4



*Dewis mwy manwl –
A More Detailed Option*



*Cyntedd a chaffi cymunedol
Foyer and community café area*



*Golwg allanol o'r ystafell ddiwyddiadau
External view of function room space*



Canolfan Llwynhendy A Chaeau Heol Gwili Llwynhendy Hub & Gwili Fields



Cynigion ar gyfer y Cae Proposals for the Field

Gweithgareddau a awgrymir ar gyfer y Cae

- Lle chwarae i blant iau
- Cadw rhywfaint o'r cae fel lle i gicio pêl
- Lle ar gyfer digwyddiadau cymunedol
- Lle tawel i eistedd allan ynddo
- Lle barbeciw a phicnic
- Cysgodfan weladwy i bobl ifanc
- Llwybrau da sy'n cysylltu â'r cae

Suggested Activities in the Field

- A play ground for younger children
- To keep some of the field for kick-about
- A place for community events
- A quiet area to sit out in
- A barbeque and picnic area
- A visible youth shelter
- Good footpaths that link into the field



Picnic, barbeciw, plannu coed anffurfiol, dôl wyllt, naturiol
Picnic, barbecue, informal tree planting, wild meadow, natural

Chwarae, ymarfer, naturiol
Natural play, exercise

Canolbwynt, celf, nodwedd
Central node, art, feature

Lle chwarae aml-ddefnydd presennol
Existing MUGA

Gardd wlyptir
Wetland garden

Lle awyr agored i'r caffï
Cafe outdoor space

Lle i weithgaredd awyr agored 'preifat'
'Private' outdoor activity space

Lle i bobl ifanc, cysgodfan, seddau
Youth area, shelter, seating

Ailgylchu
Recycling

Parcio
Parking

'Y Cae': lle i gicio pêl, digwyddiadau, dathliadau
'The Field': Kickabout, events, fetes

Estyniad y ganolfan
Extension hub

Llyfrgell bresennol
Existing library



Cynigion ar gyfer y Cae Proposals for the Field

Naturiol, picnic, barbeciwr



Natural, picnic, barbecue



Organig, lle chwarae i blant



Organic, childrens' play



Gardd wlyptir



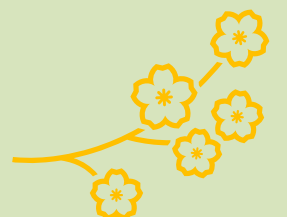
Wetland garden



Cicio pêl a digwyddiadau



Kickabout and events





Canolfan Llwynhendy a Chaeau Heol Gwili Llwynhendy Hub & Gwili Fields



Beth yw eich Gweledigaeth a'ch Syniadau ar gyfer y Ganolfan a'r Cae? What's Your Vision & Ideas for the Hub and Field?



Sut allwch chi wneud sylwadau?

Dewis 1 - Llenwi ein harolwg

❖ Dyma'r ddolen i'r arolwg:

<https://www.surveymonkey.co.uk/r/llwynhendyproposalssurveycym>

❖ Os na allwch chi lenwi arolwg ar-lein, gofynnwch am gopi papur trwy ffonio Darren Rees yng Nghyngor Gwledig Llanelli ar 01554 774103

Dewis 2 - E-bostiwn ni

❖ E-bost Darren.Rees@llanelli-rural.gov.uk

Dewis 3 - Ffonio neu Ysgrifennu atom
01554 774103

Darren Rees
Cyngor Gwledig Llanelli
Adeiladau Vauxhall,
Vauxhall, Llanelli,
Sir Gaerfyrddin,
SA15 3BD

Beth sy'n digwydd nesaf?

- ❖ Byddwn yn adolygu eich sylwadau gyda'r nod o'u gwau i'n hadroddiad terfynol
- ❖ Byddwch yn chwilio am gyllid ar gyfer y cynigion
- ❖ Byddwn yn dod â grwpiau lleol at ei gilydd i helpu rheoli'r Ganolfan a'r Cae yn y dyfodol

Cymryd rhan

❖ Os hoffech chi gymryd rhan neu gadw mewn cysylltiad, rhowch eich cyfeiriad e-bost neu fanylion cyswllt ac fe wnawn ni gysylltu â chi

How Can You Make Comments?

Option 1 - Fill in our survey

❖ Survey link is here:

<https://www.surveymonkey.co.uk/r/llwynhendyproposalsurvey>

❖ If you cannot fill in a survey online, please request a paper copy by phoning Darren Rees at Llanelli Rural Council on 01554 774103

Option 2 - Email us

❖ Email Darren.Rees@llanelli-rural.gov.uk

Option 3 - Phone or Write to Us
01554 774103

Darren Rees
Llanelli Rural Council
Vauxhall Buildings,
Vauxhall, Llanelli,
Carmarthenshire,
SA15 3BD

What Happens Next?

- ❖ We will review your comments and look to build these into our final report
- ❖ We will explore funding for the proposals
- ❖ We will bring together local groups to help manage the future Hub and the Field

Getting Involved

❖ If you want to get involved or keep in touch, please leave us your email address or contact details and we will contact you

DIOLCH AM EICH DIDDORDEB

THANKS FOR YOUR INTEREST

